





# The Chapter Experience Matters

For most members, the Pi Beta Phi experience begins with a collegiate chapter. It's in the chapter that we first get a glimpse of what being a Friend and Leader for Life is all about. We form our closest friendships, embrace the values nearest to our sisterhood and, if done well, the chapter experience teaches us that Pi Phi is forever.

Again and again, data points to what Pi Phi leaders have long believed: The chapter experience is the most critical predictor of long-term engagement in Pi Phi. We consider the time in the chapter to be vital to building young members into women of intellect and integrity, cultivating leaders and planting the seeds for a lifetime of philanthropic service. In fact, we believe the chapter experience provided by Pi Phi sets members apart from their peers by providing unique resources which propel them to success.

However, the chapter experience is often the most volatile. The future of our sisterhood lies in the hands of women between the ages of 18 and 22, and the decisions our youngest members make sometimes have the greatest impact on Pi Phi. While good decisions continually demonstrate the relevance of our sisterhood, it's the poor decisions that often get the most attention and have the

longest-lasting effects. Thus, Pi Phi invests in educating, advising and supporting our chapters with vigor. We look for opportunities with proven results, and we focus on areas with lasting impact. In building a premier chapter experience, here are some facts we've learned over time:

## PI PHI COLLEGIANS VALUE THE EDUCATIONAL AND LEADERSHIP PROGRAMMING PI PHI OFFERS.

For the last three years, 94 percent of initiated Pi Phi collegians report being satisfied with the quality of our educational programming. *Leading with Values*®, Pi Beta Phi's New Member Development Program, and Critical Conversations®, our risk prevention education program, consistently deliver valuable resources to today's collegians. In-person leadership experiences such as College Weekend and Pi Beta Phi Leadership Institute are highly-attended each year the events are offered. Evaluations often point to a desire for more chapter members to have the opportunity to experience our programs.

## TOO MANY PI PHI COLLEGIANS DON'T PLAN TO STAY ENGAGED AFTER COLLEGE.

Last year, one out of five Pi Phi seniors **already** reported being unlikely to support the Fraternity after graduation by paying dues, volunteering and/or joining an alumnae club. This is a concerning statistic, since we know dues payers and donors support vital Pi Phi programs, and club membership is a great opportunity for lifetime engagement. For an organization dependent on the resources of our members and the talents of more than 2,000 volunteers, the question becomes *who will lead Pi Phi in the future?*



## COLLEGIANS RECOGNIZE PI PHI CONTRIBUTES TO THEIR SUCCESS.

Ninety-five percent of collegians report being satisfied with the women they have become through their involvement with Pi Beta Phi last year. Nine out of 10 report being satisfied with the academic support they receive from Pi Phi as well as satisfied by the social and philanthropic opportunities presented by Pi Phi. The personal development skills Pi Phis gain through their membership are preparing them for success after college.

## COLLEGIANS WANT INTERACTION WITH ALUMNAE.

In annual reports, it's rare that a Pi Phi collegian states her interaction with local alumnae is too much. In fact, almost a quarter of collegians say their alumnae interaction is too little. Pi Phi collegians are craving mentoring relationships with their alumnae sisters — and when they engage, alumnae sisters find being a mentor is rewarding.

## A PREMIER HOUSING EXPERIENCE IS CRITICAL.

Pi Phi data points to the residential housing experience, when offered, as the number one factor in determining the satisfaction and engagement of the collegiate member. Annually, reports on Pi Phi housing become more and more positive, but there is still significant work to be done. With the average Pi Phi facility built in 1919, offering a competitive facility where members can live, learn and grow together is a challenge. Members' needs and expectations are constantly changing, and housing is becoming more complex to manage.

This issue of *The Arrow* explores the concept of "Coming Home." Coming home can have a literal meaning. It's wonderful to see the bricks and mortar where you made lifelong friendships and memories. More importantly, coming home means coming back to your sisters, back to Pi Phi and remembering the ceremonies, songs and events you shared then and still share today. The following stories illustrate how the chapter experience sets the tone for Pi Phi life after college and demonstrate why an investment in today's collegians is an investment not only in young women, but also in the future of Pi Phi. It's true that home is where your heart is. Home is where your sisters are. ◀



# Home is where your story begins

Pi Phi is a place that offers opportunities for engagement and connection, no matter how many years have gone by. For many Pi Phis, reconnecting with sisters is like coming home.

As the years passed, the Colorado Gamma sisters who pledged in the late 1990s tossed around the idea of a reunion. In early 2018, the dream of getting the group together had started to become a reality, as **MARTI HUNT WILLIAMS, KIRSTA RINEHART BRITTON** and **AIMEE HECKEL MARKWARDT** decided it was finally time to put the idea into action.

"We made a Facebook group, threw around ideas and finally decided we had to just bite the bullet, pick a date and commit to it," Aimee said. "We formed a small group of planners, which turned out to be a few girls who served on exec at the same time I did. We already knew how to work together and kind of fell into our past roles in the planning process."

Marti's time at Colorado Gamma was such an integral part of her life that she wanted to reminisce and celebrate that time with the people who meant most to her — her sisters. "The women I met through joining Pi Phi are still great friends of mine," she said. "We've shared each other's life experiences — marriages, divorces, children, careers, moves, illnesses. They are my foundation." Marti recalls that during the 18 years since graduation, when a major event has happened, her Pi Phi sisters have always been there for each other. "They really are my adult family," she said. "The Colorado Gamma house wasn't just my house. It was my home."

Colorado Gamma sisters who pledged in the late 1990s gather in front of the chapter house at their reunion in Summer 2018.

PHOTOGRAPHY BY: Nicole Hart Photography





Above: Bid Day Fall 1998. The Fall 1997 New Member class welcomed the new Fall 1998 Pi Phis to Colorado Gamma!

Middle: **NICOLE HART LEWIS** and **AIMEE HECKEL MARKWARDT** with the Pi Phi letters in 1997.

Bottom: Nicole and Aimee with the Pi Phi letters in 2018.

Marti's connection to Pi Phi runs deep. Her mother, **PATRICIA WIMBERLY HUNT**, is a South Carolina Alpha, and growing up Marti knew leadership development, Sincere Friendship and Philanthropic Service to Others were at the core of membership in Pi Beta Phi. "I wanted to have all these experiences that I heard my mom talk about," she recalled. "Becoming a Pi Phi and living in the house gave me a home away from home and made a large university feel much smaller."

Pi Phi provided many leadership development opportunities for Marti. As a collegian, she served as Vice President for Moral Advancement and Chapter President; those experiences became a springboard to starting her career. "Pi Phi gave me the opportunities to practice those skills in a really comfortable, warm situation," she said. "It helped build my confidence as a leader and gave me experiences that I wouldn't have had otherwise. It's a huge part of who I have become."

Kirsta, who was Chapter Vice President during Marti's tenure as President, echoes her friend's sentiments. "Pi Phi was the foundation of my professional success," she said.

"The leadership experience I gained has led to me being hired for multiple jobs."

During the reunion planning, Marti was able to connect with the Colorado Gamma Chapter House Corporation to coordinate a visit to the chapter house, making the reunion even more special.

"Visiting the house was nostalgic," Kirsta recalled. "It was so fun to go through all the rooms and see what is still the same and what has changed. It's such a fleeting time in your life and you don't realize just how important that time was until you go back years later."

**CARYN WAGNER PRATT** felt the house had the same warm, welcoming atmosphere she remembered from the late 1990s. "It was crazy to see how things have been updated, but still feel the same," she said. "It didn't seem like much time had passed, except for the fact that they don't have a phone room anymore!"

Many of the women keep in touch through the power of social media, which is a wonderful way to stay connected, especially with those sisters who are far away.

But the reunion allowed for a more authentic, personal connection. "To get back together and have the laughs and goofiness and the serious talks about the things that have happened through life — you can't do that over Instagram or Facebook," Caryn said. "I spent a lot of my formative, younger years with these women, and it was wonderful to visit with them."

Aimee felt the same. "I was so excited to see the people I hadn't seen for so many years, and it was so special to return to our old house," she said. "It felt special to show my daughter my old room and tell her about Pi Phi. It was like introducing her to a part of myself that she never knew before. In that, it made me feel more whole—more known, being able to fuse my life today, as a wife and mother, with my life yesterday, as a college sorority girl. I feel like my family understood me a little bit better by knowing the women who were so formative in shaping who I am today."

Seeing how the chapter has grown and thrived was equally as exciting to the women as reconnecting with one another. The reunion was just as much a celebration of their friendships and relationships, as a celebration of the chapter itself.

"Colorado Gamma is still here and going strong," Marti said. "Some of the traditions we started are still going on. Even some of the décor we've used is still there. It's neat to see our chapter flourishing and providing the same opportunity for women today that we had 20 years ago."

I walked away feeling proud of who we were during our years there, but also the productive, fabulous women in society we've become. All the values we talk about in Pi Beta Phi are being lived by these women. It's an amazing thing to see."

Caryn agreed. "To have spent so much time in a place that you love, that grew you as a person, where you made these great friendships and know that it's continuing to provide these things for other people is thrilling," she said. "It's exciting that other women are finding it—that they are finding a place to call home."

Aimee, Caryn, Kirsta and Marti all agree that the connections they've

made through Pi Phi are life-changing and the bonds that they've formed are irreplaceable. "We cannot say enough about the foundation Pi Phi provided for us and the home it was when we were all away from our own homes," Marti said. "You don't appreciate that you will never again get to live in a house with all these friends of yours. It isn't until that time in your life is over, that you realize how special and valuable it was."

The women encourage other sisters and chapters to have their own reunions. "It was so fun and a great way to spend a weekend reconnecting with people that you spent a lot of time with in your young, formative years," Caryn said.

Aimee adds, "And, when we were all reunited, it felt like we had never been apart." ◀

I WALKED AWAY FEELING *super proud*  
OF WHO WE WERE DURING OUR YEARS THERE,  
BUT ALSO PROUD OF THE  
*productive, fabulous women*  
*in society we've become.*

Right: From left, **NICOLE HART LEWIS**, **KIRSTA RINEHART BRITTON** and **AIMEE HECKEL MARKWARDT** gather at the Colorado Gamma Chapter house.

Below: Daughters of the Colorado Gamma sisters pose with the Pi Beta Phi letters.





# Connected through Commitment

What connects you to Pi Beta Phi? Pose this question and you're likely to receive as many answers as there are Pi Phi sisters. A common thread is the depth of the relationships woven throughout our sisterhood. The bonds created through shared values and purpose stand strong in the face of time, distance and generation.

Yet in some cases, just the shared experience of membership in a particular chapter is enough to bring sisters together in their love of Pi Phi and support of the Fraternity — even those who don't know each other well. Such is the case for a group of sisters from the Alabama Gamma chapter at Auburn University. What began as two close friends talking about how to support the **SHINE THROUGH** campaign, evolved into a group of five women inspired to ensure the future of their chapter and Pi Beta Phi by establishing the Alabama Gamma Scholarship.

**JILL LANMAN SCHNEIDER** and **KATHY WAGER EWING** met as chapter sisters at Alabama Gamma in the early 1970s. "Jill was my first Pi Phi friend," Kathy recalls fondly. Both

women enjoyed a strong collegiate experience, served in chapter leadership roles and, after their days at Auburn, honored their lifelong commitment to Pi Phi through alumnae involvement, financial support and volunteer service. Jill is a Foundation volunteer and currently serves on the Alumnae Advisory Committee for South Carolina Alpha; she has served the Fraternity over the decades in roles ranging from Alumnae Club President to serving on the Emma Harper Turner Fund Committee to Chapter Province President. Kathy has served Collegiate Region Four as Risk Management/Policy Specialist and Director, recently retired from service to Alabama Gamma's Chapter House Corporation and is the Foundation Board of Trustees' Vice President Development.

Both women view their decision to give back to Pi Phi as a key part of their member experience. "We are first and foremost Friendship Fund donors, which is critically important to the Fraternity's future," Kathy says. As plans for the **SHINE THROUGH** campaign developed, each woman looked to the other to discuss ideas for support. "When the campaign launched, we knew we wanted to do something special beyond our support

of the Friendship Fund," Jill says. "Kathy and I talked about the idea for probably a year, deciding what we wanted to do, before we involved anyone else." As their conversations progressed, Jill and Kathy felt they could make a meaningful impact by creating a scholarship fund. (In the spirit of Sincere Friendship, each woman gives the other credit for the idea.) When they learned that Alabama Gamma didn't yet have a dedicated scholarship fund with the Foundation, their aim became clear. "We wanted our scholarship to go to a woman at Auburn because that's where our friendship started," Jill says.

Through her work with the Foundation, Kathy was sharing news about the campaign with other longtime chapter friends when she realized she could bring together a group of like-minded sisters to grow the scholarship. "Not everyone in the group knew each other, but we were all connected by a shared commitment to Pi Phi, supporting our chapter and supporting the Friendship Fund," Kathy says.

Five women from the Alabama Gamma Chapter, all Friendship Fund donors — Jill, Kathy, **MARY BETH RHYNE DYKES**, **KARIN DANIEL FRYE** and **JACQUE BANKSTON JOHNSTON** — ultimately made the commitment to create the Alabama Gamma Scholarship. The full group of donors connected in person for the first time in October 2017, when they "came home" to the Auburn campus to present

the scholarship to the Alabama Gamma collegians. Each woman spoke about her collegiate experience, alumnae involvement and why she decided to support **SHINE THROUGH**. "With this gift, we've financially supported the women of Alabama Gamma, but we all see the benefit of giving that support to all Pi Phi sisters," Kathy says. "Our connection started within our chapter but extends far beyond it."

Kathy and Jill consider both their scholarship gifts and their ongoing volunteerism as investments in the future of their chapter and the Fraternity. "I support our collegians because there's no better way for a young woman to develop leadership skills and find her philanthropic passion than to be part of a Greek organization," Kathy says. "Through my involvement and financial support, I'm helping develop the next generation of Pi Phi leaders, scholars and philanthropists."

Jill also sees her contributions as a way to honor the Pi Phis she feels privileged to have known throughout her years. "I am tied to the Fraternity because of all the women I've met and worked with, from great Pi Phi leaders of the past to our current collegians," she says. "My experiences are all pieces of a puzzle that fit together — support of the Foundation, organizational knowledge and history, volunteer work, sisterhood and friendships — and I can't imagine my life without it." ◀

Below: Alabama Gamma collegians gather around scholarship donors after the Alabama Gamma Scholarship was officially presented to the chapter in October 2017.







# Lifelong Commitment Begins in the Chapter

When you ask seasoned alumnae volunteer and Chapter Support Officer **BARBARA MCREYNOLDS LAMASTER**, Kentucky Beta, about her involvement, she says “Whatever Pi Phi asks me to do, I do it.” She sees herself as an advocate for ensuring a premier collegiate experience. “I am so fortunate to have the opportunity to give back to Pi Phi and to support all of my sisters, regardless of what generation we belong to.”

Barbara’s belief in the power of the collegiate experience stems from her own challenges and experiences as a young Pi Beta Phi at the University of Kentucky. “I was part of a spring New Member class that was rather small,” she says. “I am grateful for having the chance to bond and become so close with those in my class.” The importance of this unity would become invaluable as Kentucky Beta faced a membership challenge.

“At the time we had a lot of graduating seniors, impacting our overall numbers,” Barbara recalls. “Almost the entire New Member class moved into the house and everyone had to put in a little more work for the chapter to continue to thrive. It took us about three years to get back up to typical membership.”

Through those years of trial, Barbara, among others, rose to the challenge. Taking on critical leadership roles, including Panhellenic delegate and Chapter President, she remembers having a wonderful and rewarding experience. “You get out of a situation as much as you put into it,” she says. “I am grateful to have had the chance to be challenged, to grow, and to ultimately become a better person thanks to that growth.”

Outside of the condition of the chapter, Barbara also faced personal hardship. Within this same period of time, she and her family learned that her father had fallen ill and eventually passed away within a few months. “Needless to say, I experienced a lot of change in my life at that time,” she says. “I started college. I lost my father. And, thankfully, I found a new family, a new support system,

that helped me navigate these unfamiliar situations. The women of my chapter supported me through everything, and that was probably the most impactful thing of all to me.”

Years later, Barbara would again experience a time of challenge and of grief with the unexpected passing of one of her nieces and then her husband. “I have experienced a lot of loss in my life,” she says. “But a consistent factor has been my sisters. My lifelong friends have always been there to support me through these tough times.” It was this show of support, and Sincere Friendship, that motivated Barbara to be a role model and to ensure all Pi Phis have the opportunity to build such valuable relationships.

In her earlier volunteer roles, Barbara gave of her talents to the Fraternity by serving in regional and national positions. She was a Collegiate Province President, a Regional Director of Chapter Support, a member of Pi Beta Phi’s NPC delegation, and served as Grand Vice President Membership from 2003 to 2005.

Opposite page: Kentucky Beta **BARBARA MCREYNOLDS LAMASTER**.

Right: Kentucky Beta Alumnae gathered around their banner during the 2015 Convention in Chicago.



Left: Kentucky Beta **BARBARA MCREYNOLDS LAMASTER** with her daughter, Ohio Zeta **MEREDITH LAMASTER** at the 2015 Convention.



# Chapter Support Structure

Pi Beta Phi was the first national women's Fraternity to recognize the value and importance of using its alumnae to give guidance and counsel to active chapter members. All chapters need support celebrating successes and navigating challenges. There is a wide range of areas in which advisement, support, and guidance is provided by various teams and individuals, including the Fraternity's values, mission and vision, policies, guidelines, and requirements and standards, in addition to chapter programming and university relationships and obligations.

An **ALUMNAE ADVISORY COMMITTEE (AAC)** is comprised of a team of women who dedicate their time as servant leaders and advisors to a local chapter. These volunteers are dedicated to support collegiate members, share their knowledge, act as mentors and help guide successful chapter operations.

Another support system is the **CHAPTER HOUSE CORPORATION (CHC)**, volunteers or assistance provided by the **FRATERNITY HOUSING CORPORATION (FHC)**. Guidance from FHC or CHC members seeks to ensure the safety and well-being of Pi Phi collegians by maintaining housing facilities.

Finally, **COLLEGIATE REGIONAL TEAMS**, including a regional director and team of specialists - consisting of a specialist for operations/advisors, finance/housing, membership, programming, and risk management/policy - provide direction and leadership to develop and maintain successful, productive collegiate chapters. Collegiate regional teams work with Alumnae Advisory Committee (AAC) members, chapter officers and Headquarters staff.

Every leader, member and chapter has opportunity for growth. An important element of the Pi Phi experience is learning from mistakes and growing from the outcomes of those missteps. Pi Beta Phi has established additional layers of assistance for those chapters in need of additional support.

**INVESTIGATIVE STATUS** is an official Fraternity process designed to assist a chapter and AAC in looking into a matter that has prompted concern by the Fraternity or Institution. Investigative Status affords the chapter a higher level of support from Fraternity Officers and Headquarters staff to look into matters of concern.

**ELEVATED CHAPTER STATUSES** assist those chapters that have one or more key areas of need. Chapters receive guidance from a dedicated Chapter Support Officer to identify tailored resources to empower chapters and their members to maximize their potential to achieve learning outcomes and ultimately, the Pi Beta Phi mission, for long-term sustainability.

A **CHAPTER SUPPORT OFFICER (CSO)** is an experienced Fraternity volunteer who is selected to assist chapters in need of extra support in one or more key areas. These individuals support a chapter by mentoring chapter officers, members and AAC in key areas of need. The CSO monitors the chapter's progress toward meeting learning outcomes and creating long-term, sustainable change.

**RECRUITMENT COACHES** are specialized volunteers that support chapters in all aspects of planning, execution, and evaluation of recruitment. A coach will analyze the execution of recruitment-related events and guide the chapter's recruitment team in using results to prepare the chapter for future success.

## Engage with Pi Phi!

Many opportunities exist where you can mentor individuals, advise chapters and shape the direction of the Fraternity. Offer your leadership skills and experiences while you engage in fun and friendship with Pi Phis across chapters and generations. Please visit [www.pibetaphi.org/volunteernow](http://www.pibetaphi.org/volunteernow) to submit your interest. ◀



Above: Pi Phis across chapters and generations gather for dinner to celebrate their sisterhood.



Above: From left, Past Grand Council members South Carolina Alpha **SARAH RUTH "SIS" MULLIS**, New Mexico Beta **BIMI LANE HUEBNER**, Washington Gamma **LUELLEN CLYMO SMITH** and **BARBARA MCREYNOLDS LAMASTER** zip lining together after a Literacy Advocacy Project training event in Gatlinburg, Tennessee.

"I really enjoyed my volunteer experiences, but something was still missing," she says. "I knew that my real passion was working directly with chapters." And from there, Barbara dedicated her time to supporting the collegiate experience in a more direct way. Aside from her service on Kentucky Alpha's AAC, Barbara volunteered to work with chapters with elevated needs.

"I like to have a challenge," Barbara says. "So, I decided to volunteer as a Chapter Support Officer and support the collegians experiencing hardship." Citing the importance of focusing on Sincere Friendship, Barbara chose to support those groups that need some hard work and focus to continue to provide the premier Pi Phi experience.

"These are not necessarily easy situations that I walk into," she says. "I go to these chapters hoping to be a motivator. I always try to be their cheerleader and do my best to provide unconditional support. Sometimes you really have to dig deep. But no matter the condition, you always find those golden nuggets and find ways to cultivate a positive outlook."

Barbara relates her work as a Chapter Support Officer back to the servant leadership model. "It is always exhilarating to find a member motivated and ready to lead change in her chapter," she says. "I am there to empower those ready to embrace a new way and a new day. Change is a good thing, and we have to keep asking ourselves if we are doing everything we can to be better."

Reflecting on her time in this capacity, Barbara is proud of her work. "I am so fortunate to be able to make some impact in a young woman's life," she shares. She explains that investing our time and energy in the chapter experience is critical to the future of our organization. "Pi Beta Phi is a lifelong commitment. For me, that begins in the chapter. Having the ability to shape the experiences of our youngest and most impressionable members is a privilege and an honor." ◀





Did you know that Pi Beta Phi Foundation gives sisters and friends the opportunity to support specific chapters? With funds designated for scholarships, leadership development and facility improvements, you can make an endless impact on our sisterhood in the area that's most meaningful to you. Below is a list of funds supporting individual Pi Phi chapters.

If a chapter or fund of interest to you is missing from the list, Foundation staff members are here to help. Contact the Foundation at (636) 256-1357 or [fndn@pibetaphi.org](mailto:fndn@pibetaphi.org) to learn more about establishing a new or existing fund. The **SHINE** THROUGH campaign is a perfect reason to make a gift to support a chapter today. All gifts made through June 30, 2019 count towards Pi Phi's largest philanthropic goal to date.

Only funds that benefit *one* specific chapter are listed in this article.

**Pi Beta Phi Foundation Funds**  
BY SPECIFIC CHAPTER BENEFICIARY

**ALABAMA ALPHA**  
Annette Mitchell Mills Undergraduate Scholarship Fund\*

**ALABAMA BETA**  
Alabama Beta Meg Ingram Memorial Undergraduate Scholarship Fund\*

**ALABAMA GAMMA**  
Alabama Gamma Undergraduate Scholarship Fund

**ARIZONA ALPHA**  
EAGP Fund  
Arizona Alpha Undergraduate Scholarship Fund\*

**ARIZONA BETA**  
Arizona Beta Undergraduate Scholarship Fund\*

**ARKANSAS ALPHA**  
EAGP Fund  
Arkansas Alpha Undergraduate Scholarship Fund\*

**CALIFORNIA ALPHA**  
CLEE Fund\*  
Amy Biehl Memorial Undergraduate Scholarship Fund\*

**CALIFORNIA BETA**  
Katherine Willms Flippo Undergraduate Scholarship Fund\*

**CALIFORNIA DELTA**  
Barbara Anderson Blake Alumnae Continuing Education (ACE) Scholarship Fund\*

**CALIFORNIA ETA**  
California Eta Angel Undergraduate Scholarship Fund

**CALIFORNIA GAMMA**  
Adrianna Bachan Memorial Undergraduate Scholarship Fund  
The Heid Foundation in Memory of Joan Heid Undergraduate Scholarship Fund  
Marilyn J. Boren-Sweeney Undergraduate Scholarship Fund

**CALIFORNIA MU**  
Bobbie Bliss Pittman Undergraduate Scholarship Fund\*

**COLORADO ALPHA**  
EAGP Fund  
Colorado Alpha Memorial Undergraduate Scholarship Fund\*

**COLORADO GAMMA**  
Colorado Gamma Undergraduate Scholarship Fund\*

**GEORGIA ALPHA**  
CHIP Fund

**ILLINOIS EPSILON**  
Annabelle Stambuli Memorial Undergraduate Scholarship Fund

**ILLINOIS THETA**  
CHIP Fund  
Judy Boucher Chamberlain Undergraduate Scholarship Fund\*

**INDIANA BETA**  
Jo Miller Lybrook Rudicel Undergraduate Scholarship Fund\*  
Susan Crane Kyle Indiana Beta Undergraduate Scholarship Fund\*

**INDIANA DELTA**  
CLEE Fund\*  
EAGP Fund - transitioning to CHIP Fund  
Miriam J. Ledyard Memorial Undergraduate Scholarship Fund  
Orpha O'Rourke Coenen Undergraduate Scholarship Fund\*

**INDIANA EPSILON**  
Indiana Epsilon Undergraduate Scholarship Fund\*

**INDIANA GAMMA**  
EAGP Fund  
CLEE Fund\*  
Betty Blades Lofton Undergraduate Scholarship Fund\*  
Patty Hill Davidson Undergraduate Scholarship Fund

**IOWA BETA**  
CHIP Fund  
Juli Holmes Willeman Undergraduate Scholarship Fund\*

**IOWA ZETA**  
CLEE Fund\*

**KANSAS ALPHA**  
CLEE Fund\*  
Kansas Alpha Undergraduate Scholarship Fund\*  
Kansas Alpha House Corporation Undergraduate Scholarship Fund  
Kansas Alpha 4.0 Awards Undergraduate Award Fund\*

**KANSAS BETA**  
EAGP Fund

**LOUISIANA BETA**  
EAGP Fund

**MASSACHUSETTS GAMMA**  
Massachusetts Gamma Undergraduate Scholarship Fund

*\*Endowed*

# Your Guide to Chapter-Specific Funds

Establishing or giving to existing scholarship funds, Chapter Leadership Education Expendable (CLEE) funds and Chapter House Improvement Program (CHIP) funds are opportunities for you to support the next generation of sisters in a chapter of your choice and ensure the future of our sisterhood. Chapter scholarships, CLEE funds and CHIP funds bear the names of the chapters they support — and once established, any member or friend can make gifts to these funds.

## SCHOLARSHIP

A variety of scholarship funds provide awards based on financial need among other criteria, which may include a chapter designation. A \$100,000 minimum gift is required to endow a scholarship in the name of a Pi Phi sister. Endowed scholarships carrying a chapter's name (one per chapter) are established with a \$50,000 minimum gift.

## LEADERSHIP

**Chapter Leadership Education Expendable** (CLEE) funds provide support for chapter leaders to attend Fraternity leadership training opportunities, like Leadership Institute, College Weekend and convention and are used to provide leadership education for the entire chapter, such as bringing a speaker to their campus. A \$10,000 minimum gift amount is necessary to establish a CLEE, which bears the name of the chapter.

## HOUSING AND FACILITY IMPROVEMENTS

A **Chapter House Improvement Program** (CHIP) fund allows chapter alumnae to make tax-deductible contributions in support of their chapter facility to fund qualified educational projects and expenses. A \$10,000 minimum gift amount is required to establish a CHIP, which bears the name of the chapter the fund supports. An Educational Area Grant Program (EAGP) fund is developed in partnership between Pi Beta Phi Foundation and a Chapter House Corporation (CHC) or the Fraternity Housing Corporation (FHC) undertaking a significant renovation or building project. ◀



**MICHIGAN ALPHA**

Michigan Alpha Undergraduate  
Scholarship Fund

**MICHIGAN BETA**

CHIP Fund

**MINNESOTA ALPHA**

EAGP Fund  
Frances H. Hofacre Minnesota Alpha  
Undergraduate Scholarship Fund\*  
Margaret Paterson Becker  
Undergraduate Scholarship Fund\*

**MISSISSIPPI GAMMA**

CHIP Fund  
EAGP Fund

**MISSOURI ALPHA**

EAGP Fund  
Karen Consalus Price Graduate  
Fellowship Fund\*  
Jane Turner Campbell Undergraduate  
Scholarship Fund\*  
Missouri Alpha Undergraduate  
Scholarship Fund\*

**MISSOURI BETA**

CLEE Fund\*

**MONTANA ALPHA**

Montana Alpha Undergraduate  
Scholarship Fund\*

**NEBRASKA BETA**

Nebraska Beta Undergraduate  
Scholarship Fund\*

**NEBRASKA GAMMA**

Nebraska Gamma Undergraduate  
Scholarship Fund\*

**NEVADA ALPHA**

CHIP Fund

**NEW MEXICO ALPHA**

Charline Sage Kuntz Undergraduate  
Scholarship Fund\*

**NEW YORK DELTA**

New York Delta Undergraduate  
Scholarship Fund\*

**NORTH CAROLINA BETA**

Carol Inge Warren Undergraduate  
Scholarship Fund\*

**NORTH CAROLINA DELTA**

CLEE Fund

**OHIO ALPHA**

Ohio Alpha Undergraduate  
Scholarship Fund\*

**OHIO BETA**

Ohio Beta Undergraduate  
Scholarship Fund\*

**OKLAHOMA ALPHA**

CLEE Fund\*  
Oklahoma Alpha Undergraduate  
Scholarship Fund\*

**OKLAHOMA BETA**

CHIP Fund  
CLEE Fund  
Jenny Goodpasture Stiegler  
Undergraduate Scholarship Fund  
Oklahoma Beta Undergraduate  
Scholarship Fund\*  
Oklahoma Beta 1962 Balfour Cup  
Memorial Undergraduate  
Scholarship Fund

**OREGON ALPHA**

EAGP Fund

**OREGON GAMMA**

Oregon Gamma Undergraduate  
Scholarship Fund\*

**PENNSYLVANIA BETA (CLOSED)**

Hannah Mervine Miles Alumnae  
Continuing Education (ACE)  
Scholarship Fund\*

**PENNSYLVANIA GAMMA**

Pennsylvania Gamma Undergraduate  
Scholarship Fund

**SOUTH DAKOTA ALPHA**

Murdy Townsend Smith Memorial  
Undergraduate Scholarship Fund\*

**TENNESSEE DELTA**

CLEE Fund

**TENNESSEE GAMMA**

CHIP Fund  
CLEE Fund  
Tennessee Gamma Undergraduate  
Scholarship Fund\*

**TEXAS ALPHA**

CLEE Fund\*

**TEXAS BETA**

CLEE Fund\*

**TEXAS DELTA**

CLEE Fund\*  
Carolyn Pavletich Lesh  
Undergraduate Scholarship Fund\*  
Texas Delta Undergraduate  
Scholarship Fund\*

**TEXAS EPSILON**

Kathy Watson Wilson Memorial  
Undergraduate Scholarship Fund

**TEXAS ETA**

CHIP Fund

**TEXAS GAMMA**

EAGP Fund  
CLEE Fund\*  
Ann Gordon Trammell  
Undergraduate Scholarship Fund\*  
Johnanna Zournas Undergraduate  
Scholarship Fund\*

**TEXAS ZETA**

CLEE Fund\*

**VIRGINIA ETA**

Andrea Armstrong Shultz  
Undergraduate Scholarship Fund\*

**WASHINGTON ALPHA**

Washington Alpha Undergraduate  
Scholarship Fund\*

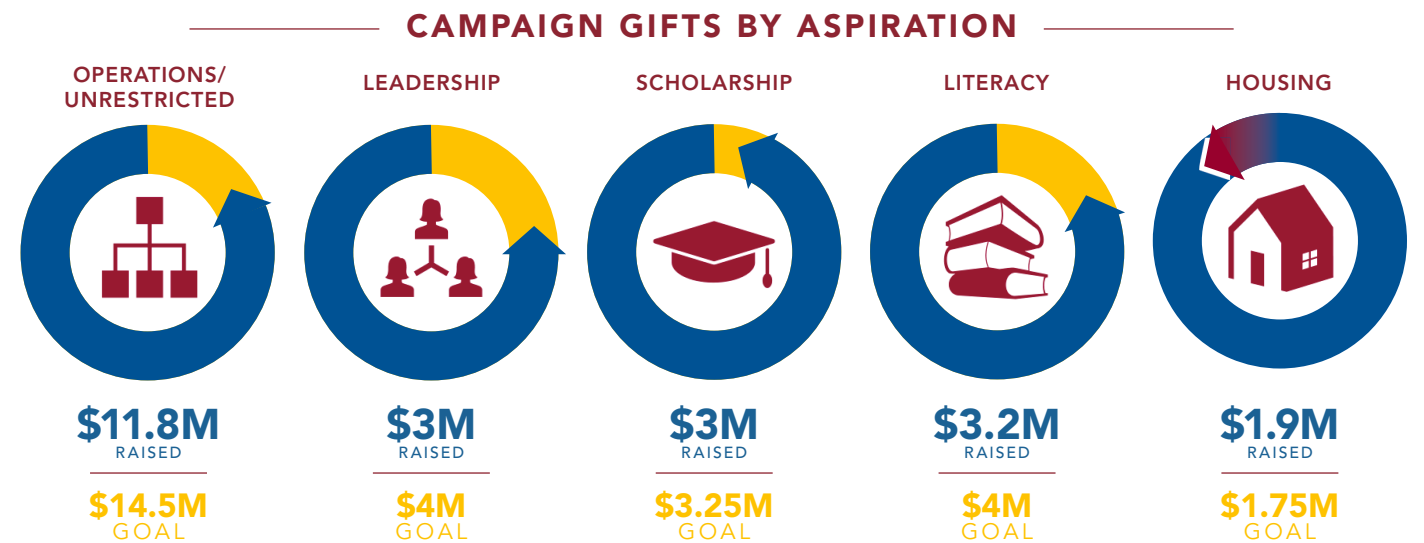
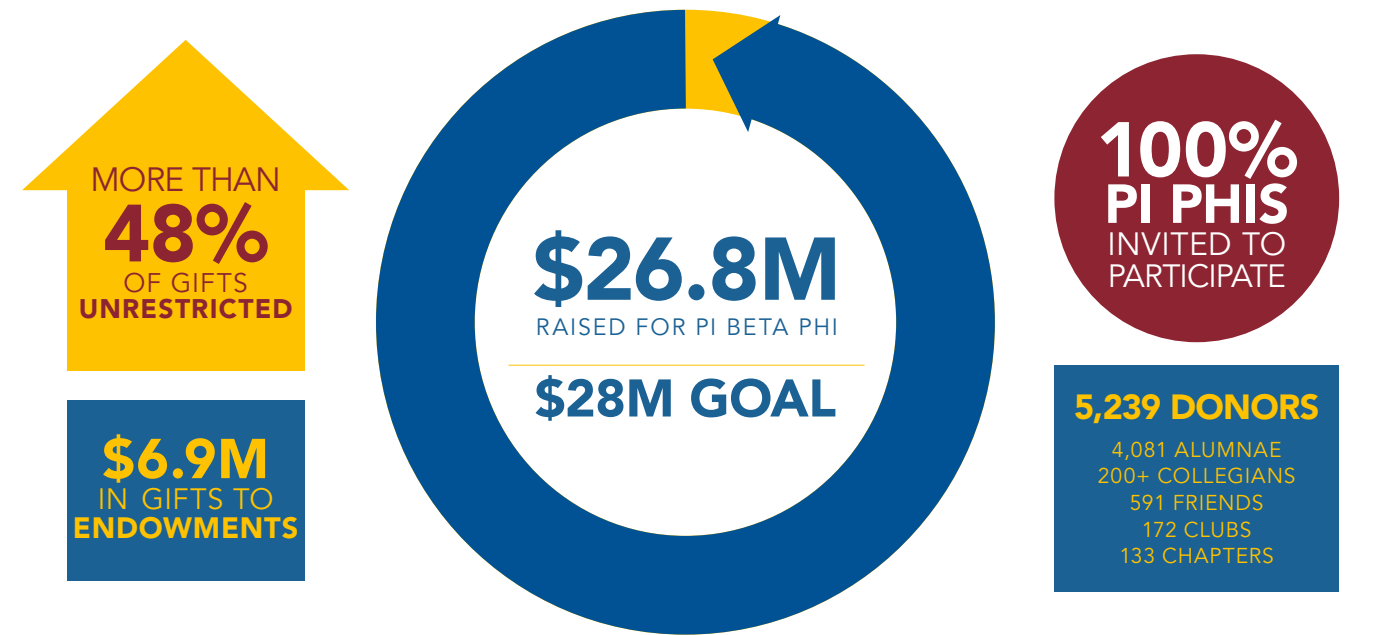
*Grants and awards are dependent on the income available for the funds and/or applications. Not all funds listed may be awarded each year. Only funds that benefit one specific chapter are listed. There are additional scholarships funds not listed which either have no recipient preference or benefit two or more chapters, a specific major, state/city of residence, state of chapter, region of chapter, chapter office or other. Please visit [www.pibetaphifoundation.org](http://www.pibetaphifoundation.org) for a complete scholarship listing.*

\*Endowed

# SHINE THROUGH

UNENDING LOYALTY. ENDLESS IMPACT.

Campaign Success Report as of November 30, 2018



## WILL YOU JOIN US AND SHINE THROUGH?

Learn more about the campaign at [pibetaphifoundation.org/campaign](http://pibetaphifoundation.org/campaign).  
Speak with a member of the Foundation team by calling (636) 256-1357.  
We'd love to schedule a visit!

Make your gift today at [pibetaphifoundation.org/givenow](http://pibetaphifoundation.org/givenow).

TEXT **SHINE** TO **51-555** TO RECEIVE CAMPAIGN TEXT UPDATES.